

FOR SALE

RESIDENTIAL - APARTMENT 458SQFT (43SQM) / CALL FOR PRICE!

+65 9879 5000

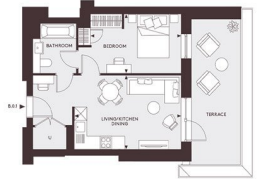


The Regent : 1 - Bedroom

TYPE B.0.1

42.9 sqm | 458 sqft

ITEM	DESCRIPTION	UNIT
1	BEDROOM	1
2	BATHROOM	1
3	LIVING/DINING	1
4	KITCHEN	1
5	TERRACE	1
6	BALCONY	1
7	STAIR	1
8	LANDING	1
9	W.C.	1
10	TOILET	1
11	WASHING MACHINE	1
12	REFRIGERATOR	1
13	COOKER HOB/HOOD	1
14	DISHWASHER	1
15	WATER HEATER	1
16	WATER SUPPLY	1
17	WATER DRAINAGE	1
18	WATER SUPPLY	1
19	WATER DRAINAGE	1
20	WATER SUPPLY	1
21	WATER DRAINAGE	1
22	WATER SUPPLY	1
23	WATER DRAINAGE	1
24	WATER SUPPLY	1
25	WATER DRAINAGE	1
26	WATER SUPPLY	1
27	WATER DRAINAGE	1
28	WATER SUPPLY	1
29	WATER DRAINAGE	1
30	WATER SUPPLY	1



RESIDENTIAL - APARTMENT

SHADWELL STREET, B4 6LJ, BIRMINGHAM,
BIRMINGHAM, UNITED KINGDOM

- LISTING ID: SGLD83614842
- TENURE: LEASEHOLD
- TITLE: N/A
- SIZE BUILT-UP: 458SQFT (43SQM)
- SIZE LAND: N/A
- NO. OF FLOORS: 21
- FLOOR/LEVEL: N/A - N/A
- BED ROOMS: 1
- BATH ROOMS: 1
- MAIDS ROOMS: N/A
- PARKING SPACES: N/A
- LAYOUT TYPE: OTHER
- FACING: N/A
- VIEWING: OTHER
- SELLING PRICE: **CALL FOR PRICE!**
- COMPLETION YEAR: 2022
- CONDITION: ORIGINAL CONDITION
- FURNISHING: PARTIALLY FURNISHED
- LISTING DATE: NOV 23, 2020

SNOW HILL WHARF

Apartment for Sale: Partially furnished, 1 bedroom, 1 bathroom. Completed in 2022, this unit is in original condition. Tenure: Leasehold

INTERIOR FACILITIES

- Balcony
- Private Garden
- Fiber-Internet
- Terrace

OTHER INTERIOR FEATURES

- Audio System
- Dishwasher
- Cooker Hob/Hood
- Fridge

EXTERIOR FACILITIES

- 24 Hours Security
- Landscaped Garden
- Covered Car Park
- Lounge

VISIT THIS PROPERTY AT: <https://www.plot65.com/property/SGLD83614842>



SAMUEL LEW - HUTTONS ASIA PTE LTD

3 Bishan Place #05-01 CPF Bishan Building
D20, 579838, Singapore

+65 9879 5000
WhatsApp Me

info@plot65.com

L3008899K
R017268I

<https://www.plot65.com>



Scan QR Code

Huttons Call for Viewing
The Agency of Choice +65-98795000