

FOR SALE

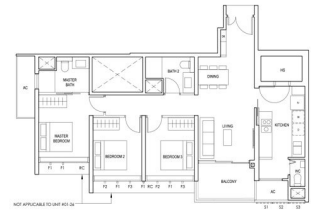
RESIDENTIAL - CONDOMINIUM 1,044SQFT (97SQM) / CALL FOR PRICE!

+65 9879 5000



3 - Bedroom Premium

TYPE (3Y)^e
17 JAN 1 10:44 AM
801-20 TO 815-25



NOT APPLICABLE TO UNIT 801-20 TO 815-25

RESIDENTIAL - CONDOMINIUM

SIMS DRIVE, EUNOS, GEYLANG, PAYA LEBAR,
SINGAPORE 387395

- LISTING ID: SGLD50607938
- TENURE: LEASEHOLD 99
- TITLE: N/A
- SIZE BUILT-UP: 1,044SQFT (97SQM)
- SIZE LAND: 4.009AC (1.623HA)
- NO. OF FLOORS: 18
- FLOOR/LEVEL: N/A - N/A
- BED ROOMS: 3
- BATH ROOMS: 2
- MAIDS ROOMS: N/A
- PARKING SPACES: N/A
- LAYOUT TYPE: OTHER
- FACING: N/A
- VIEWING: OTHER
- SELLING PRICE: **CALL FOR PRICE!**
- COMPLETION YEAR: 2025
- CONDITION: ORIGINAL CONDITION
- FURNISHING: PARTIALLY FURNISHED
- LISTING DATE: APR 20, 2021

PENROSE

Condominium for Sale: Partially furnished, 3 bedroom, 2 bathroom. Completed in 2025, this unit is in original condition. Tenure: Leasehold 99 Located in Singapore's district D14 near Eunos, Geylang, Paya Lebar in the area Eunos (Central region).

INTERIOR FACILITIES

- Balcony
- Bombshelter

OTHER INTERIOR FEATURES

- Audio System
- Cooker Hob/Hood
- Dryer
- Fridge

EXTERIOR FACILITIES

- 24 Hours Security
- Clubhouse
- Covered Car Park
- Game Room

VISIT THIS PROPERTY AT: <https://www.plot65.com/property/SGLD50607938>



SAMUEL LEW - HUTTONS ASIA PTE LTD

3 Bishan Place #05-01 CPF Bishan Building
D20, 579838, Singapore

+65 9879 5000
WhatsApp Me

info@plot65.com

L3008899K
R017268I

<https://www.plot65.com>



Scan QR Code

Huttons® Call for Viewing
The Agency of Choice +65-98795000